



REPLACEMENT PARTS SUITABLE FOR ESAB® PT-600®

REPLACEMENT PARTS SUITABLE FOR PT-600®

SILVEREX-® ELECTRODE GET THE MOST FROM YOUR PLASMA CUTTING SYSTEM!

- Increase speed of your plasma cutting system
- Get the better productivity of your system
- Decrease your production costs

Silver conducts electrical current better than copper and because of this more energy is delivered directly to the plasma arc, resulting in increased cutting speeds up to 30% compared to ordinary electrodes.

The silver transfers heat away from the tip, cooling the hottest area of the electrode. The high current transfer and optimum cooling guarantee the maximum life of the consumables while maintaining or improving cut quality – less slag, narrower kerfs, and better appearance.

High cut quality is also influenced by the quality of materials and production precision of the consumables; for electrodes the important size in tolerance is $\pm 0,02$.

Thermacut guarantees that its silver electrodes contain >90% of pure silver, which is superior to all other aftermarket competition.



electrode
0558001624-AG



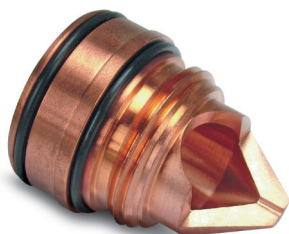
electrode
0558002516-AG



SilverEX-® electrode – silver from end-to-end.
Silver purity is not discernable by the eye alone; that's why Thermacut had laboratory research conducted to verify the silver purity by an independent laboratory in New Hampshire – New Hampshire Laboratory, Inc. no. 24906c

ONE-PIECE AND TWO-PIECE REPLACEMENT NOZZLES AVAILABLE FOR PT-600® TORCHES – GREATER FLEXIBILITY

one-piece nozzle
0558001882



nozzle base
22026

nozzle tip
22027



We offer two types of nozzles designed to give you greater flexibility depending on how you use your plasma system. The two-piece nozzle consists of a base and a tip. The advantage of the two-piece design is that only the worn-out tips need to be replaced while the base can be reused for a period of time, saving you money. Two-piece nozzles are best suited to lower amperage applications. The second nozzle is a one-piece design. It is best suited for higher amperage, higher heat applications where the one-piece design allows for greater cooling of the nozzle. Because of the superior heat transfer, the nozzle lasts longer than the comparable two-piece design would at the same amperage.

Regardless of the type of nozzle you choose, you can be assured Thermacut nozzles are of the highest quality. Particular attention is paid to the nozzle orifice during production, where circularity, cylindricity, and roughness of the machined hole are some of the key factors that must be accounted for. This provides for excellent cut quality when using our products.

REPLACEMENT PARTS SUITABLE FOR PT-600® TORCH

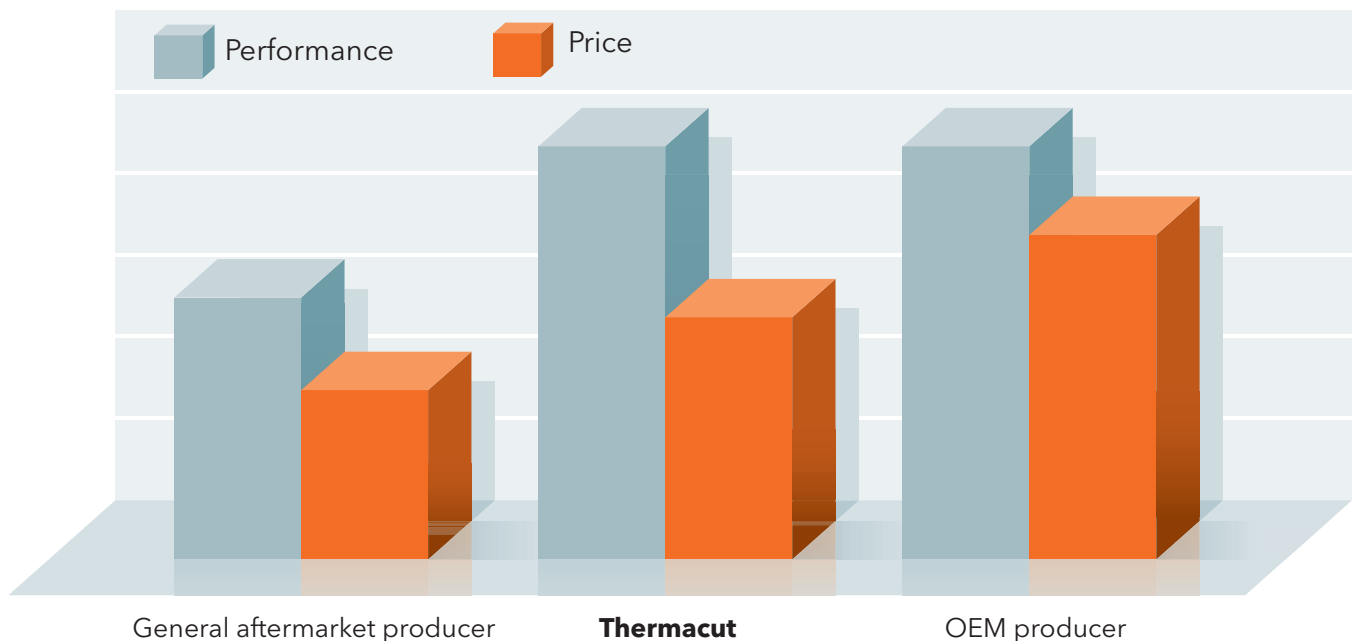
Compact and tough, our replacement torch suitable for PT-600® is designed for high current loading up to 600 Amp. The torch is suitable for a variety of metals, including mild and stainless steel, aluminum, and copper. It is also possible to vary the type of shield gas used according to the cut materials; i.e. shop air, oxygen, argon, and nitrogen. Maximum cutting thickness for mild steel is 38mm (1.5") and up to 75mm (3") for stainless steel.

Our torch provides you with very good cut quality throughout a wide range of amperages and applications, all while maintaining an excellent price-to-performance ratio.

Thermacut leads packages are also available as necessary.

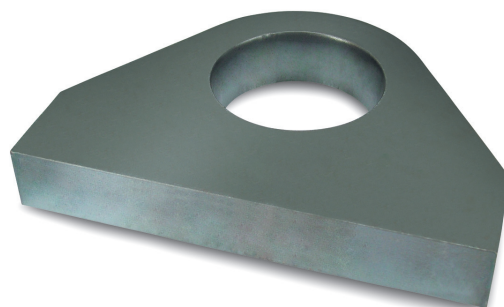


GRAF: COMPARISON OF PT-600® CONSUMABLES PRICE AND PERFORMANCE WITH CONSUMABLES PRODUCED BY THE OTHER MANUFACTURERS

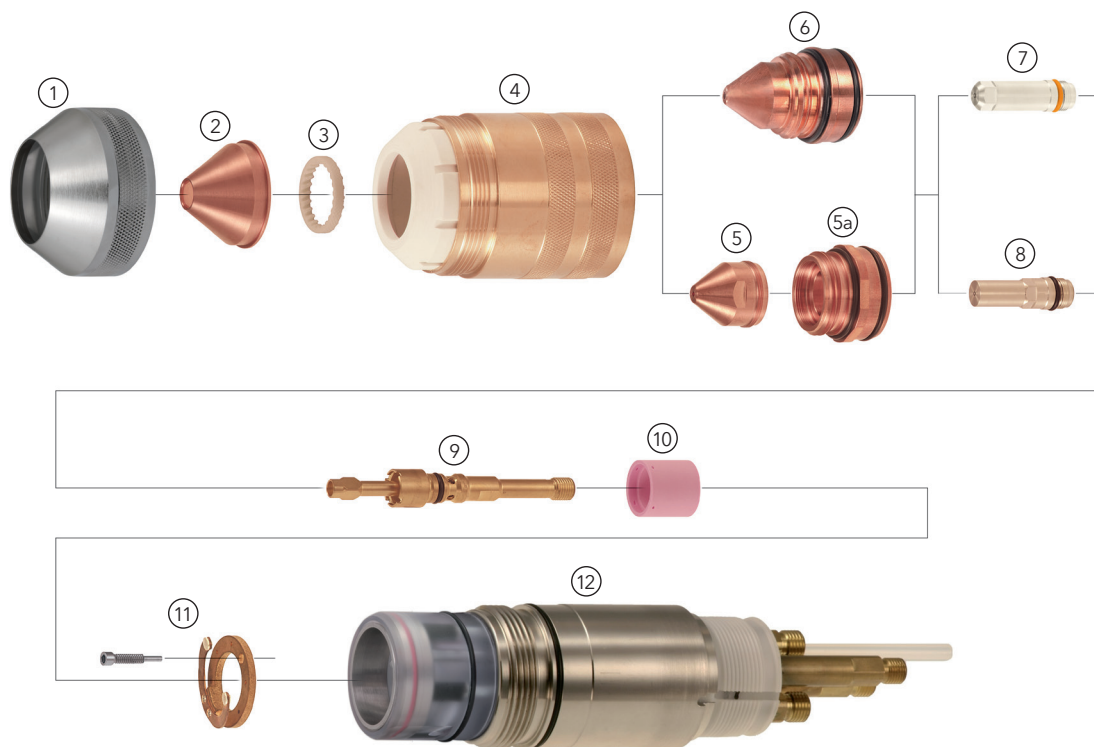


Cut quality achieved with Thermacut torch suitable for PT-600®
Cutting speed 1,6 m/min.

20 mm mild steel
250 Amp
Cut angle 0°-3°



REPLACEMENT PARTS SUITABLE FOR PT-600®



Item	Part No.	Ref. No.	Description	Std. Pkg.	Item	Part No.	Ref. No.	Description	Std. Pkg.
1.	T-10128	37081	Shield Retainer	1		T-5334	0558001884	Nozzle 200A	1
2.	T-2266	21802	Shield 100-250A	1		T-5330	0558001623	Nozzle 250A	
	T-2267	21945	Shield 360A	1		T-5335	0558001885	Nozzle 360A	1
	T-4580*	21795 OEM	Shield 50A	1		T-5336	0558001886	Nozzle 400A	1
NS	T-10124	0558004678	Precision shield 110-200A			T-5337	0558001887	Nozzle 600A	1
3.	T-2269	21944	Gass Diffuser 100-360A	1	7.	T-4907	0558001624-AG	Electrode 250A, SilverEX-®	5
	T-10331	22496	Gass Diffuser 100-360A, ccw	1	8.	T-4910	0558002516-AG	Electrode 360/400A, SilverEX-®	5
NS	T-2268	21796	Gass Diffuser 50A	1	9.	T-11201	0558001621	Electrode Holder	1
4.	T-10129	37082	Nozzle Retaining Cap	1	10.	T-4606	0558002533	Gas Baffle, 4 hole × 0,032, CW	1
5.	T-1717	22029	Nozzle Tip 100A	1		T-4607	0558002534	Gas Baffle, 4 hole × 0,032, CCW	1
	T-1718	22030	NozzleTip 150A	1		T-4636	0558001625	Gas Baffle, 8 hole × 0,047, CW	1
	T-1719	22031	NozzleTip 200A	1		T-10695	0558002530 OEM	Baffle, 8 Hole × 0,047, CCW	1
5a.	T-1722	22028	Nozzle Base 100-200A	1		T-11119	0558002530	Baffle, 8 Hole × 0,047, CCW	1
6.	T-5331	0558001881	Nozzle 50A	1	11.	T-2352	37071 OEM	Contact Ring Assembly	1
	T-5332	0558001882	Nozzle 100A	1	12.	T-10283	0558001825	Torch Body	1
	T-5333	0558001883	Nozzle 150A	1	NS	T-11202	T-11202	Electrode holder wrench	1